



A Newsletter From  
Rocky Mountain  
Mennonite Camp

## WINTER 2005

### EAGLES NEST SERVING GUESTS YEAR AROUND

After more than a year of hard work and long weekends by staff and volunteers, the Eagles Nest cabin is finished. Our first occupants stayed in the new cabin in June and it has been enjoyed by many other guests since then.



View of the kitchen/dining area

Please come and experience the new cabin with your family or church group as the new Eagles Nest is the first ridge cabin to offer heat and running water all year long. The cabin has a vaulted ceiling with a great room which includes a full kitchen, dining table, and living room on the main level. There are two bedrooms downstairs with a queen bed and one bedroom with two single beds. The upstairs loft has two bunk beds and additional space for couches.

There is a separate bathroom and shower room along with a sink and mirror in a foyer area to allow more people to get ready to begin or conclude the day. A beautiful deck with furniture is a great place to enjoy the view of both the Pikes Peak Massif to the East and the Continental Divide to the West.

Please contact the camp to make a reservation and enjoy this beautiful facility. By taking advantage of the camp facilities you are also supporting the overall operations of the camp which makes this ministry a success.

### WHY I SERVE

This place is my Ebenezer. I am sure you have sung the song, "Come Thy Fount of Every Blessing" and remember the verse, "Here I raise my Ebenezer....". What is an Ebenezer anyhow? I had never thought much about it. I just liked singing the song. In reflecting about RMMC and why I serve, the illustration of an Ebenezer came to mind. The story of the Ebenezer is found in 1Samuel 7:12. The Lord has

-see *Ebenezer* on page 3



Eagles Nest was officially dedicated by participants during the All Camp Supporters Retreat in October



### VISION 2012

### RENEWAL AND RESTORATION

#### PROJECTS FOR 2006

##### Chalet Emmental Renovation

- Replace windows
- Insulate between rooms for sound
- Redo interior finishes
- Replace furniture

##### Chapel

- New roof with metal shingles

#### PROJECTS ALREADY COMPLETED

##### Acquire 3 Acre Feet of Water Rights

- PURCHASED '03

##### New roof for Eiger, Jungfrau & Heidi

- COMPLETED '03

##### Water truck

- PURCHASED '03

##### Wilderness Vehicle

- PURCHASED '05

##### New Eagles Nest

- COMPLETED '05

#### FINANCIAL UPDATE

##### Campaign Financial Goal

from 2002 through 2012	\$500,000
Gifts Already Received	\$236,180
Future Pledges	\$17,100

##### Amount needed to fulfill VISION 2012

\$246,720

To continue our pace of accomplishments, your continued support of financial gifts and volunteer time will make all the difference. Help us meet and exceed the \$50,000 needed each year to complete and fulfill projects of the **VISION 2012** Campaign.

Thanks!

## PROJECT/VOLUNTEER COORDINATOR POSITION ADDED

With the number of large projects and aggressive pace of the VISION 2012 Campaign, Camp has been searching for the right person(s) to serve as Project/Volunteer Coordinator(s). Ron and Joanne Murray have answered this call and will come to Rocky Mountain in January to begin a one year term of service as volunteers.

Ron & Joanne are from Sterling, Ohio and retired two years ago only to enter voluntary service in La Jara, Colorado. Ron was Development Director for Habitat for Humanity and Joanne worked as a Teacher's Assistant and Tutor in La Jara Elementary School. They concluded a two year term last July.

Ron retired from Galehouse Construction Co. in Ohio where he worked for 34 years

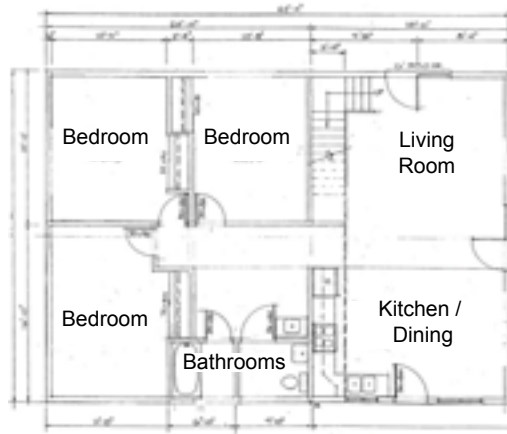


starting out in the carpentry crew and eventually moving to an office where he designed and sold cabinets. Ron also took a sabbatical

from work to study at Hesston College, taking two inter-terms in the Pastoral Ministries Program.

Joanne opened her own business "Murray's Art & Sign Studio," where she designed signs and painted murals. She also is a free-lance illustrator for "Story Friends," a leaflet for Sunday School children.

Ron and Joanne are not strangers to Colorado or to RMMC. In their first two years of married life, they served in Mennonite Voluntary Service in Denver and were part of the the Pioneer Sunday School class. In the 1960's they came to RMMC and served as camp counselors for a week. Throughout the years they have been drawn back to Rocky Mountain numerous times, even bringing the whole family out to camp for their 40th wedding anniversary. The Murray's have three married sons and five grandchildren.



*Eagles Nest floor plan*

## AN EAGLES NEST THANK-YOU

There never is a good way to thank all the folks who have helped build the Eagles Nest cabin, but let me try and point out a few folks who made our job a whole lot easier.

○ Various work crews – for their willingness to take time to help including but not limited to Leon Stutzman & the regular crew from 1st Menn. Denver

- Corbin Graber – for a little of everything including renting backhoes
- Mary Yoder – for all the great meals and snacks for staff and volunteers
- Camp Summer Maintenance Crew – for work from digging to painting
- Carl Yoder – for being our Electrician, traveling all the way from Ft. Collins
- Brian Leatherman – for providing the heat and hot water
- Ivan White – for the beautiful woodwork on the handrail / stairs to the loft
- Lynell Unruh – for his countless planning/design time as architect
- Allan Bartel – for his Fabulous 50 fundraiser with this project in mind
- Camp Board – for seeing the project through from "vision" to reality

Last, but not least, thank you to my wife and kids who spent way too many weekends at home without a dad around. Thank you for your support of this camp and me.

While this is an incomplete list, I want to thank everyone who helped with this project and all who support this ministry with their prayers, time and financial resources!

*-Mark Bechler - Camp Board Member and project contractor*

## VOLUNTEERS NEEDED FOR CHALET EMMENTAL & CHAPEL IMPROVEMENTS

The Emmental retreat center has served countless campers and guests over the 23 years since it was built. We have already begun to make scheduled improvements with the completion of a new roof and the installation of a hot water heater system.

The inside renovation work is scheduled to begin with the arrival of our new Project/Volunteer coordinator in January. While Ron will be able to help keep the project moving along on a regular basis, the success of the

**VISION 2012 CAMPAIGN** is built on both financial support and the willingness of volunteers to help get the job done.

This summer, we will also begin renovation on the Chapel by replacing the original shake shingles.

Please consider these service opportunities and contact the camp so that we can plan for you and your group to join in!



*Fishing on a beautiful Colorado day*



## EBENEZER *(continued from cover)*

once again been faithful; the Israelites have defeated the Philistines. Samuel takes a rough stone and places it as a marker saying, "Thus far has the Lord helped us." From a search on the Internet I came across this:

When Robinson wrote his lyrics, he followed the word Ebenezer with the phrase, "Here by Thy great help I've come." An Ebenezer, then, is simply a monumental stone set up to signify the great help that God granted the one raising the stone. In Robinson's poem, it figuratively meant that the writer—and all who subsequently sing the song—acknowledge God's bountiful blessings and help in their lives.

I could never find a good explanation for why I feel compelled to give and serve at RMMC. Sure, it's a beautiful place, peaceful and rugged, and the cooking...Mary, just keep those no-bakes coming. But, it really is so much more than that.

For me, it is a place where I reconnected with my relationship to Jesus Christ. Camp is a place where I can remember how God has helped me. It serves as an Ebenezer in my life. That is why I feel a passion to see that it is cared for. I hope people find RMMC to be a place to reconnect with God in a way they might not experience elsewhere. I hope you find Jesus waiting, wanting to share his life with you.

-Mark Bechler



*Mountain biking through the stream during Wilderness Camp*



## THANK YOU! - SUMMER STAFF OF 2005

Russell Adrian	Butterfield MN	Bethel College	Heidi Johnson	Topeka KS	Bethel College
Nathan Buhr	Wichita KS	Bethel College	Claire Lagerwey	Seattle WA	Goshen College
Isca Lucia, Alonzo	HONDURAS	MCC IVEP Program	Ashley Luginbuhl	Bluffton OH	Goshen College
Sarah Dodge	Appleton WI	University of WI	Jacob Miller	Lakewood CO	Happily Graduated
Will Eichelberger	CO Springs CO	Happily Graduated	Remilyn Mondez	PHILIPPINES	MCC IVEP Program
Jean Enns	Wichita KS	University of Kansas	Jenelle Musselman	New Holland PA	Bluffton University
Rebecca Friesen	Newton KS	Newton High School	Rachel Neufeld	CO Springs CO	Happily Graduated
Patricia Goering	Topeka KS	Allen Co. Comm. College	Jenna Preheim	Monument CO	Hesston College
Jared Hawkey	Homewood IL	Bethel College	Rachel Reimer	Sioux Falls SD	Goshen College
Elizabeth Heiks	Appleton WI	Goshen College	David Stucky	Moundridge KS	Bethel College
Megan Hochstetler	Apple Creek OH	Hesston College	Tom Unruh	Newton KS	Happily Graduated
Trisha Hostetter	Pennsburg PA	Goshen College	Joel Van Wingerden	CO Springs CO	Hesston College
Tyler Jantzen	Tucson AZ	Gonzaga University	Marie Voth	Hesston KS	Hopi Mission School
Nicholas Janzen	Hesston KS	McPherson College	Jill White	Newton KS	Happily Graduated

# PROGRAM CALENDAR 2006

## WINTER / SPRING

January 20-22	Scrapbook Retreat
February 10-12	Jr. High Snowcamp – NEW!
February 17-19	Senior High Snowcamp I
February 24-26	Young Adult Retreat
March 3-5	Men's Retreat
March 17-19	Senior High Snowcamp II
April 21-23	Spring Quilter's Retreat

## SUMMER

June 4-10	Staff Orientation
June 11-17	Sr. High Resident
June 11-17	Grade 6&7 Wilderness
June 18-24	Grade 8&9 Resident
June 18-24	Grade 6&7 Peak Wilderness
June 25-July 1	Grade 6&7 Resident
June 25-July 1	Grade 8&9 Wilderness
July 2-8	Grade 4&5 Resident
July 2-8	Grade 8&9 Peak Wilderness
July 9-15	Custom Group Wilderness
July 21-23	Grade 3 Resident
July 23-29	Sr. High Peak Wilderness
July 24-28	Family Camp I
July 30-August 4	Family Camp II
July 30-August 5	Sr. High Adventure Wilderness
August 6-11	Family Camp III

## FALL

August 18-20	Emmanuel Mennonite Retreat
September 1-3	Peace Mennonite Retreat
September 9-10	Glennon Heights Mennonite Retreat
September 15-17	Beth-El Mennonite Retreat
September 22-24	First Mennonite Denver Retreat
Sept. 29-Oct 1	Greeley Mennonite Retreat
October 6-8	Mountain Community Mennonite Retreat
October 27-29	RMMC Annual Board & Advocate Retreat
November 3-5	Fall Quilter's Retreat
November 10-12	Pastor/Spouse Retreat



*Grade 6 & 7 cooling off in the snow on the hike to Eyebrow*

*Trail Call is published each winter by Rocky Mountain Mennonite Camp.*



### Rocky Mountain Mennonite Camp

709 County Rd 62  
Divide Colorado 80814  
phone: 719-687-9506  
fax: 719-687-2582  
email: [info@rmmcamp.org](mailto:info@rmmcamp.org)  
web: [www.rmmcamp.org](http://www.rmmcamp.org)

#### Staff Members

Corbin Graber, Executive Director  
Mary Yoder, Head Cook

#### Board Members

Ardell Swartzendruber, President  
Lynn Horner, Vice President  
Loren Unruh, Secretary  
Kay Gusler, Treasurer  
Mark Bechler  
Lisa Longacher  
Jodi Miller  
Ed Shirk

*Rocky Mountain Mennonite Camp is a ministry of the Mennonite Church with the purpose of providing a place of retreat which encourages holistic Christian growth by fostering the spiritual, social, physical, and intellectual growth of each guest.*



*Campers kayaking on the pond*