



# THANKS TO OUR GREAT VOLUNTEERS

September to December 2013



Greeley Mennonite Church volunteers winterized the campground by stacking picnic tables under the tarp.

Dale Cook  
 Jesse Florez  
 Frank Gaeddert  
 Mary Ellen Gaeddert  
 Andrew Gibson  
 Brad Hershberger  
 Alyssa Hostetler  
 Heidi Johnson  
 Tyler Miller  
 Nathan Penner  
 Ben Regier  
 Neil Richer  
 Ben Sampson  
 Cami Sampson  
 Jacob Sampson  
 Sarah Sampson  
 Jill Schmidt  
 Daniel Spicher

Ethan Spicher  
 Jean Spicher  
 Jeff Spicher  
 Leon Stutzman  
 Ardell Swartzendruber  
 Duane Unruh  
 Cory Urban  
 Roger White  
 Leonard Yoder  
 Marilyn Yoder  
 Paul Yoder  
 Lauren Weaver  
 Mennonite Voluntary Service Units:  
 Alamosa  
 Boulder  
 Kansas City  
 Sioux Falls



John Reesor and Neil Richer chop wood during the regional retreat for Mennonite Voluntary Service.



Jeff Spicher cuts lettuce during a weekend retreat.

## 2014 SNOW CAMPS AT RMMC

Western District, South Central, and Mountain States Mennonite conferences invite all youth groups to the annual snow camps held at RMMC. Snow activities include tubing, snowshoeing and the annual broom hockey tournament. Be inspired by the singing and worship as part of the weekend.

### Junior High - January 24-26, 2014

*"Called to be ZOMBIES?! Dead to Sin and Alive in Christ."* Speaker: Joe Wuest  
Music led by: Jesse Goertzen

### Young Adult - February 21-23, 2014

visit [www.rmmc.org](http://www.rmmc.org) for more information

### Senior High I - February 14-16, 2014

### Senior High II - March 14-16, 2014

*"What if...?"* Speaker: Scott Roth  
Sr. High I music led by: Jeremy Kempf  
Sr. High II music led by: Jesse Goertzen



Snow campers battle for the ball during a game of broomball on the frozen pond.

## RMMC BOARD TRANSITIONS

Thanks to Ardell Swartzendruber (Denver, CO) for his 24 years on the camp board with the past 10 years as board president. He has been honored to serve in the role as have so many good people who shaped and guided the camp since its beginning. Highlights over the years include the National Forest land exchange (own vs. lease property, future ridge cabin development, 1989), introduction of year around staff housing (Director Residence, 1993), smooth transition of the Executive Director position (2001), securing of water rights (2003), and the addition of the Program Director position (2010).



Rodney Stutzman, Ed Shirk, Ardell Swartzendruber

Ardell's family is also very supportive of camp as his wife Donna and daughters Heidi and Sarah have all attended summer camp and served as summer staff. Ardell reflects, "RMMC for me has always been a place of respite, regeneration and reconnecting with the Spirit. God's amazing nature is such a great break from the city's frantic pace."

The board president position has been filled by current board member Ed Shirk (Woodland Park, CO). Ed has most recently served on the board since 2011, having served as the Kansas representative in past years. His wife and three daughters have also been connected to RMMC as volunteers, campers, and summer staff. He has often commented that RMMC is "God's favorite place on earth."

Rodney Stutzman (Centennial, CO) joins the board with many connections to RMMC. He attended summer camp beginning in 3rd grade, his father served on the RMMC board and continues to be a faithful volunteer, and his children now attend summer camps. Rodney shares, "[Camp] is absolutely the highlight week of my children's entire year. As a parent it brings me a sense of peace to see them so connected to camp and feeling like they will go, have fun, encounter ideas of faith, and be well fed and well cared for the entire time. I feel like I've received much and am happy to have a way to continue to feel connected and helpful. I look forward to the increased involvement that being on the board will bring."

# COME STAY WITH US!

Available dates for the ridge cabin rentals and Emmental Retreat Center

Dates listed are available nights. Please contact camp to confirm availability.

## JANUARY 2014

Eagle's Nest: 1-23, 26-31  
 Sky-Hi-View: 1-23, 26-31  
 Rocky Ridge: closed for winter  
 Solitude Center: 1-31  
 Emmental: 1-2, 5-16, 19-23, 26-31

## FEBRUARY 2014

Eagle's Nest: 1-28  
 Sky-Hi-View: 1-28  
 Rocky Ridge: closed for winter  
 Solitude Center: 1-28  
 Emmental: 1-13, 16-27

## MARCH 2014

Eagle's Nest: 1-18, 23-31  
 Sky-Hi-View: 1-31  
 Rocky Ridge: closed for winter  
 Solitude Center: 1-31  
 Emmental: 2-13, 16-31

## APRIL 2014

Eagle's Nest: 1-23, 27-30  
 Sky-Hi-View: 1-30  
 Rocky Ridge: closed for winter  
 Solitude Center: 1-30  
 Emmental: 1-23, 27-30



The permanent staff (Corbin, Tom, Mary, Jenelle) were thrilled to receive a box of goodies and a plaque of the Serenity Prayer from the 2013 summer staff as thanks for a good summer. The permanent staff greatly appreciated the summer staff's willingness to be the eyes, ears, hands, and feet of Christ to all who were here this summer.

## PASTORS' RETREAT



Colin Roynon and Merv Birky, pastors of Beth-El Mennonite, enjoyed time to connect outside the church.

Mountain States Mennonite Conference pastors gathered at RMMC in November for their annual retreat. As a way to rest and recharge, this retreat is a place for pastors to be encouraged in their ministry work. Over 50 pastors and family members attended the retreat. There were great conversations, competitive games of Rook, spirited square dancing, many laughs, and an overwhelming sense of a close community of friends. Duane Yoder, pastor at Lindale Mennonite Church in Linville, VA, shared his insights about pastoral ministry during the worship sessions.

## DID YOU KNOW?



Bryan Yoder, summer staff, makes an inaugural basket to christen the new goals.

There are many physical improvements that guests can see immediately when arriving at camp. Other improvements are on the smaller (more invisible) scale. Here is a list of what has been accomplished by the many volunteers and staff this past year.

- ❑ **Updated facility map** now includes features such as handicap accessible entrances.
- ❑ **Updated guest information booklet** contains general information about camp, birds and mammals at RMMC, hike descriptions, area attractions and more.
- ❑ **New adjustable basketball goals.**
- ❑ **New pricing system for youth camps (Good / Better / Best rates)** allows campers to receive a discount by registering for a camp by a certain date.
- ❑ **Keurig machine** in Zurich Dining Hall was purchased to meet the many requests for fair trade coffee and different varieties of roasts.
- ❑ **Moved outhouse to Staffville** (male summer staff housing area) from Eagle's Nest for use by Staffville residents and campers using the nearby challenge course.
- ❑ **BBQ pit** returns after three years (fire bans, health guidelines)
- ❑ **Overwhelming compliments from Food/Health, Child-care License, and Fire inspectors.** RMMC passed all three inspections with flying colors. The inspectors even asked for brochures to take home!



Mary Yoder, head cook, carefully watches the chicken cook over the charcoals.

## WHAT YOU SAID...

"Can never say enough good things about my stay at the Solitude Center. It's my favorite place to pray, read, and talk to God. Thank you for making it so affordable. Love this place."  
 - Guest

"This camp has been an amazing part of my life. I'm going to miss it, but I know it's helped immensely in my faith. I'll never forget this place."  
 - Sr. High Camper

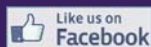


Another great Quilter's Retreat was held this fall at RMMC. Quilters share their completed and in-progress projects, play quilting games, have great conversations, and make lots of amazing works of art.



## ROCKY MOUNTAIN MENNONITE CAMP

709 County Road 62  
Divide, Colorado 80814  
phone: 719-687-9506  
fax: 719-687-2582  
email: [info@rmmc.org](mailto:info@rmmc.org)  
online: [www.rmmc.org](http://www.rmmc.org)



### STAFF MEMBERS

Corbin Graber, Executive Director  
Mary Yoder, Head Cook  
Jenelle Roynon, Program Director  
Tom Unruh, Facilities/Special Projects Dir.  
Jill White, Nature/Special Projects Dir.

### BOARD MEMBERS

Ed Shirk, President  
Jodi Miller, Vice President  
Jean Spicher, Secretary  
Dennis LeFevre, Treasurer  
Diane Fowler  
Lisa Longacher  
Dave Miller  
Rodney Stutzman

*Rocky Mountain Mennonite Camp is a ministry of the Mennonite Church with the purpose of providing a place of retreat which encourages holistic Christian growth by fostering the spiritual, social, physical, and intellectual growth of each guest.*

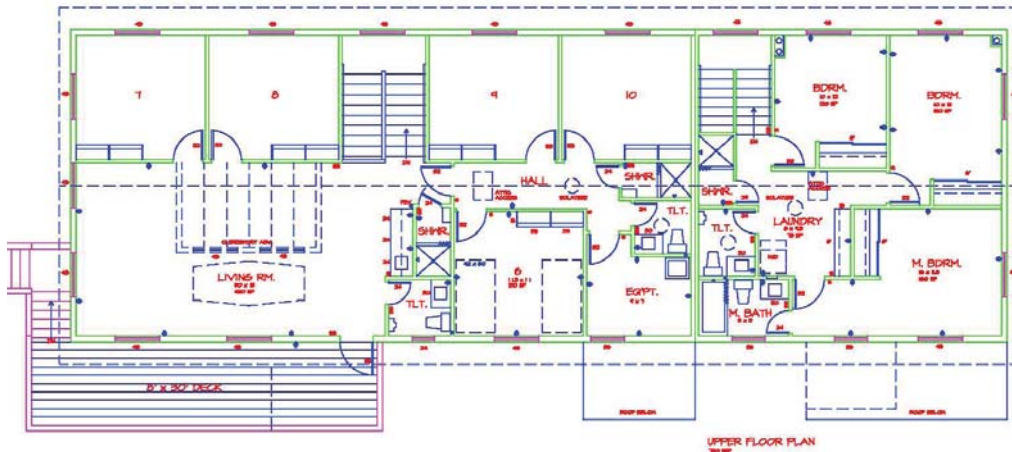


# VISION 2020 CAPITAL CAMPAIGN

LOOKING TO THE FUTURE

## WHAT IS THE FIRST CAMPAIGN PROJECT?

The first campaign project is to replace the Pleiades and Infirmary facilities (log structures built in the early '60s). The goal is to begin August 2014 after family camps and be ready by June 2015 for the summer camp season!



## HOW WILL THIS PROJECT SUPPORT THE RMMC MINISTRY?

Providing a variety of programs along with a variety of facilities is a unique challenge. The proposed design above (upper level floor plan) will provide the following benefits to the camp's ministry:

- ❑ Accessible sleeping rooms with inside bathrooms near the DH/Lodge.
- ❑ Rooms for two persons to better serve increasing number of adult program retreats, church groups and volunteers.
- ❑ Provide a comfortable and functional infirmary for youth camps as required by our child care license.
- ❑ Improve female summer staff accommodations.
- ❑ Add needed permanent staff housing.
- ❑ Save money with improved energy efficiency (insulation, windows, etc.).
- ❑ Relocate staff lounge (now in Langnau room in DH/Lodge) to provide a new office entrance and lounge area for guests in DH/Lodge year around.

## ADDITIONAL VISION 2020 CAMPAIGN PROJECTS

- ❑ \$200k - Replace boys side bathhouse.
- ❑ \$160k (20k per year) - Ongoing water system improvements (new wells at Eagles Nest & Park Ridge).
- ❑ \$80k - Replace aging camp vehicles (current vehicles total 2,000,000 miles!)
- ❑ \$20k - New playground for a variety of ages.
- ❑ \$40k - Bern Dining Hall renovation (refinish walls, new windows, increase insulation).

## HOW CAN I HELP?

Financial gifts of \$300,000 are needed to complete this project along with a significant number of volunteers. Please consider how you can support this project and other Vision 2020 projects with generous gifts of time (volunteering) and resources (financial, donated materials, equipment, etc.).

Tom Unruh has agreed to serve as the Capital Project Coordinator and will work with volunteers throughout the project. Volunteers will also be treated to good meals, courtesy of Mary Yoder, along with a place to stay.

Come as an individual, as a family or as a church group and be part of making the Rocky Mountain ministry possible for current and future generations!



Capital Project Coordinator Gary Blosser led volunteers to complete the Eiger bathhouse renovation in 2008.

# TRAIL CALL

ROCKY MOUNTAIN MENNONITE CAMP  
709 County Road 62, Divide, CO 80814

719-687-9506 [www.mmc.org](http://www.mmc.org)



## YOU'VE BEEN SPOTTED!

We spotted Elsa Goossen (Topeka, KS) (second from left) wearing her RMMC shirt in Fort Benning, Georgia! Elsa met up with past RMMC summer staff at a School of the Americas protest. Thanks, Elsa, for sharing RMMC with Georgia! Share a "spotted" photo with us. Email [jenelle@rmmc.org](mailto:jenelle@rmmc.org).

To update your contact information or to be removed from our mailing list, please contact us by phone (719-687-9506) or email ([info@rmmc.org](mailto:info@rmmc.org))

## UPCOMING EVENTS

**January 17-19**  
Scrapbook Retreat

**January 24-26**  
Junior High Snow Camp

**February 14-16**  
Senior High Snow Camp I

**February 21-23**  
Young Adult Snow Camp

**February 28 - March 2**  
MSMC Men's Retreat

**March 14-16**  
Senior High Snow Camp II

**April 24-27**  
Spring Mennonite Quilter's Retreat

**May 23-26**  
Memorial Day Work & Play Retreat

## MOUNTAIN STATES MENNONITE CONFERENCE MEN'S RETREAT

FEBRUARY 28 - MARCH 2, 2014

Plan to attend the annual MSMC Men's Retreat, held at RMMC February 28 to March 2, 2014. This year's theme is "Peace" and how that belief relates to our lives today. Sharing during the worship sessions will be Mary and Peter Sprunger-Froese, founding board members for RAWtools, on the topic:

*"Whose are we?: Being in the world but not of it...stepping stone or stumbling block?"*

Also during the worship sessions, we welcome each participant to share your story about how living out Jesus' call to peace has shaped your life, the lives of your home congregation, and/or your community.



Fred Martin, founding board member for RAWtools, on right, works at turning a gun into a garden tool.

On Saturday, RAWtools will be turning a gun into a garden tool. Men are invited to participate with this process and try their hand at transforming the gun into a tool. Tools made at the retreat will later be sold to help support the work of RAWtools.

The mission of RAWtools, Inc. is to repurpose weapons into hand tools to be used in the creation of something new, preventing the weapon's use for violence and creating a cycle of peace. RAWtools is based out of Colorado Springs and is committed to having an Anabaptist witness in the community.

For more information and to register online go to [www.rmmc.org](http://www.rmmc.org).